

Reference projects





Sweden
2020: Älvsborg Bridge
Göteborg











Sweden

2018: Svinesund,
Swedish Border

TULLGRÄNS / CUSTOMS LINE

Inget att deklarera



Nothing to declare

Varor att deklarera



Goods to declare



Sweden

2013: Danvikstull

Stockholm



3,4 m



50 m



United Kingdom

2014: Heathrow Airport Traffic System











NE ROAD ROUNDABOUT

Exit (M4, M25)
C. London
Slough (A4)

15'0"

Renaissance
Hotel

Terminal
1 2 3

Airport tunnel
325 yards

←

C







United Kingdom
2012: Hyde park London

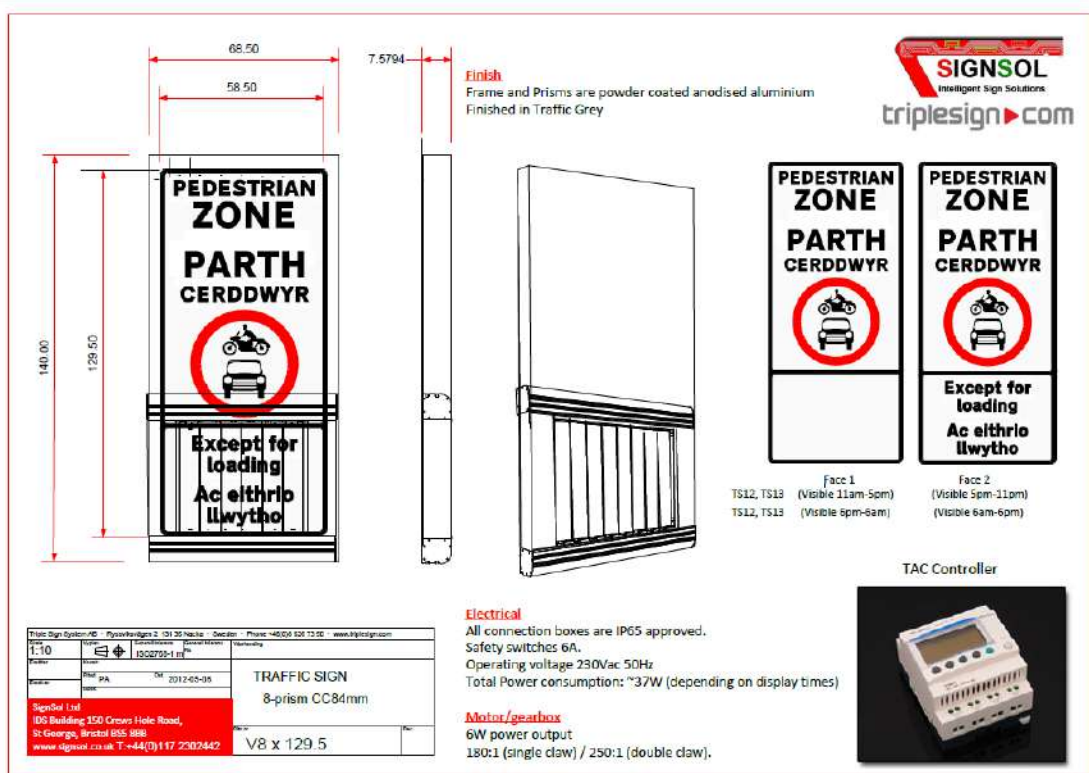




United Kingdom

2018: Aberdare pedestrian zone







United Kingdom
2019: Ramsgate (Kent)



United Kingdom
2014: Installation on A23
London-Brighton







Israel

2012-2022: Various
projects



מנהרה סגורה
نفق مغلق
Tunnel Closed





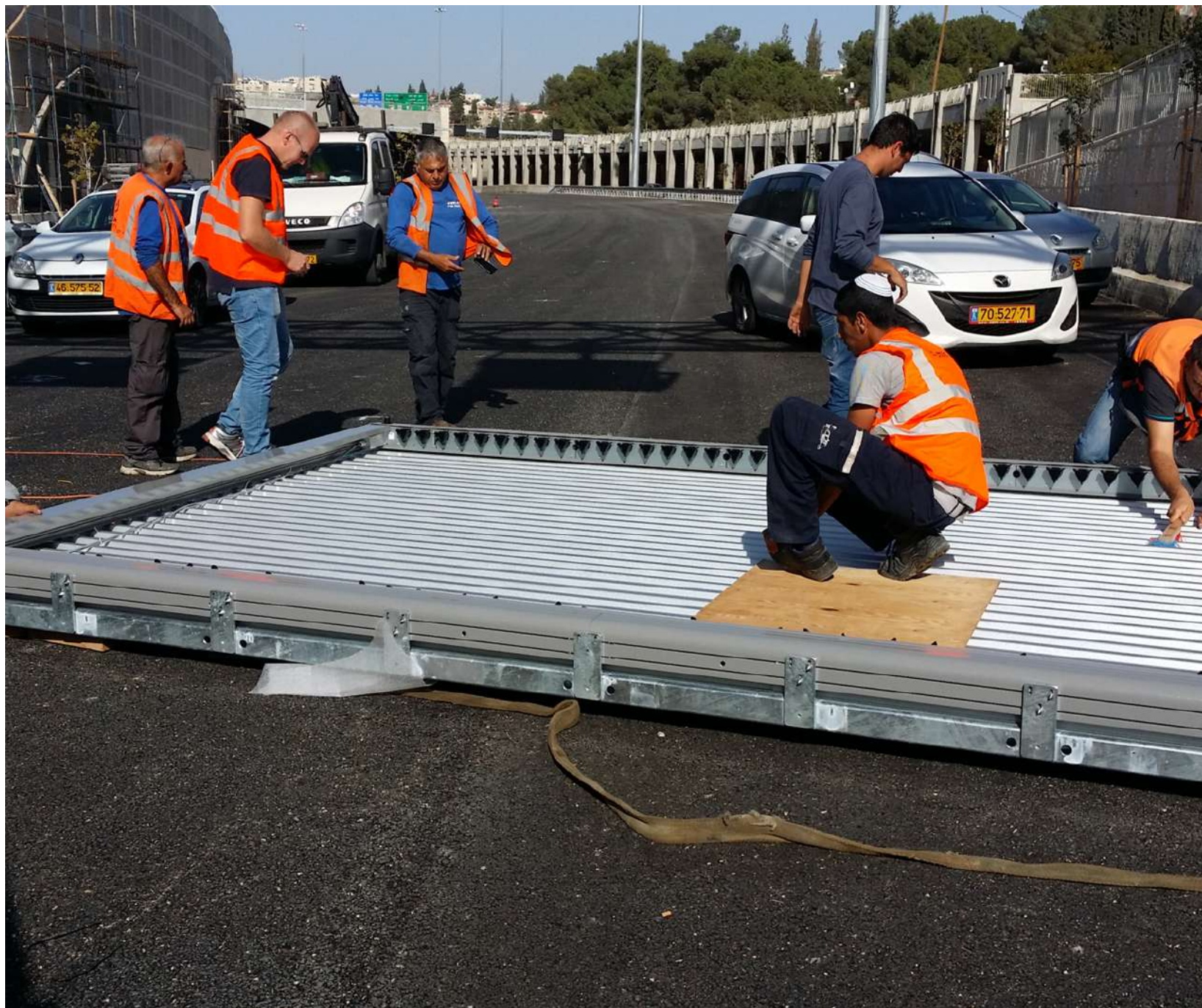
















מכסה סגורה
مغلق
Tunnel

מב הרה סגורה

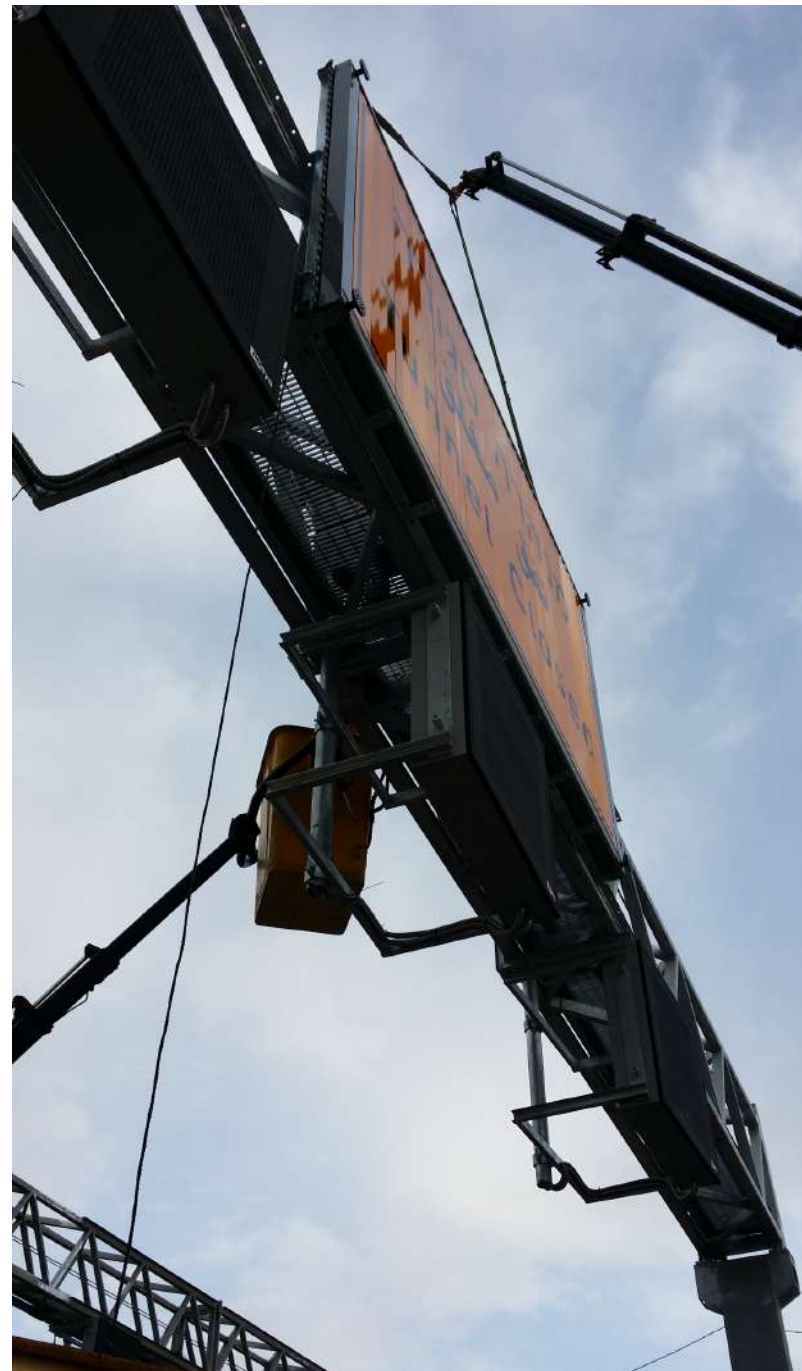
نفق مغلق

Tunnel Closed















Israel

2014: Jerusalem - Begin
Boulevard











Italy

2019: Autostrada A4





Italy
Toll Station - Milano



servata clienti
LEPASS



Italy

Toll station – Rosignano
Autostrada







Poland
2020: S19



WYNAJEM PODNOSNIKÓW ☎ 513 737 81

WYNAJEM
PODNOŚNIKÓW
☎ 513 737 81

11
163

40

Kołobrzeg
Wałcz
Gdańsk
Koszalin

500 m

↑  S12 ○ 15

↑ Objazd
do węzła Lublin Felin
(16 km)

↑  S12 ○ 13

↑ Objazd
do węzła Lublin Tatarzy
dla pojazdów <20t
(14 km)











S6 E28 Gdańsk



113

Maszewo
Żółwia Błoc



✈ Goleniów



S6

E20

11

163



Kołobrzeg
Wałcz

500 m





Poland

2019: S7 Chęciny (near Kielce) -
Distributor Look-Sys



Road: S7

26-060 Chęciny (near Kielce).

There are 2 WIM Stations. When the Police is working on the road and stopping the trucks, the sign will show speed limits and information about the control.

Totally 12 Triplesign VMS were delivered for this project

Austria – S 7 Fürstenfelder
Schnellstraße (Riegersdorf junction
(A 2) to the border at
Heiligenkreuz – 2023

A total of 4 signs were delivered in
2023. The second part of the
project (a total of 10 signs will be
delivered in Mai 2024)







Norway –Troms (Northern Norway) – 2023

Project managed Amparo Solutions in Norway

Troms is a remote area in northern Norway, where the signs must operate year-round. Given that the region experiences polar night for more than a month during the winter, it was imperative for the solution to have an exceptionally low power consumption.

The solution was installed on a road section where two trucks cannot see each other coming and where they cannot pass each other. Warning the truck drivers in time for an oncoming truck prevents them having to reverse their vehicle over a long distance.



